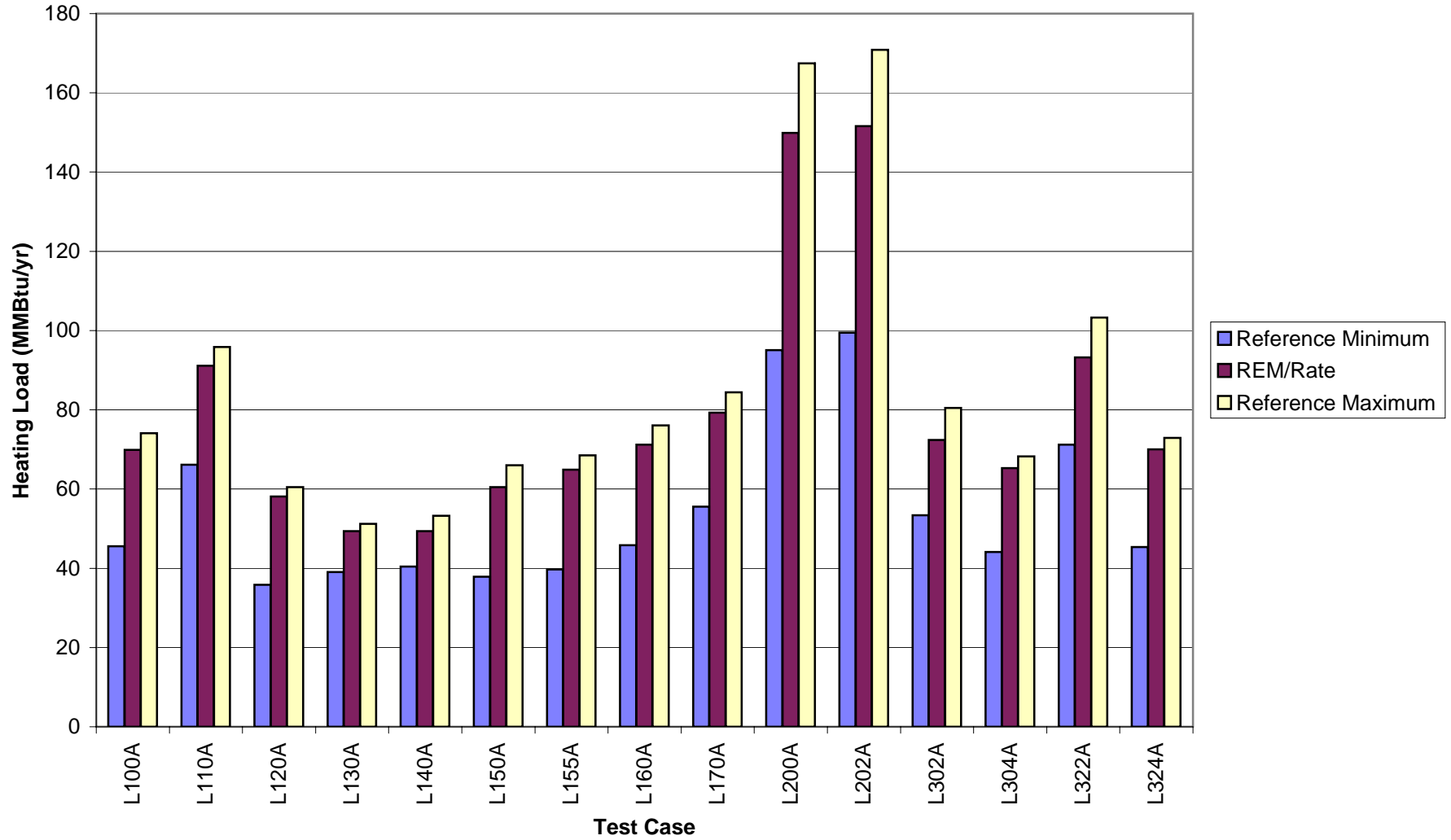
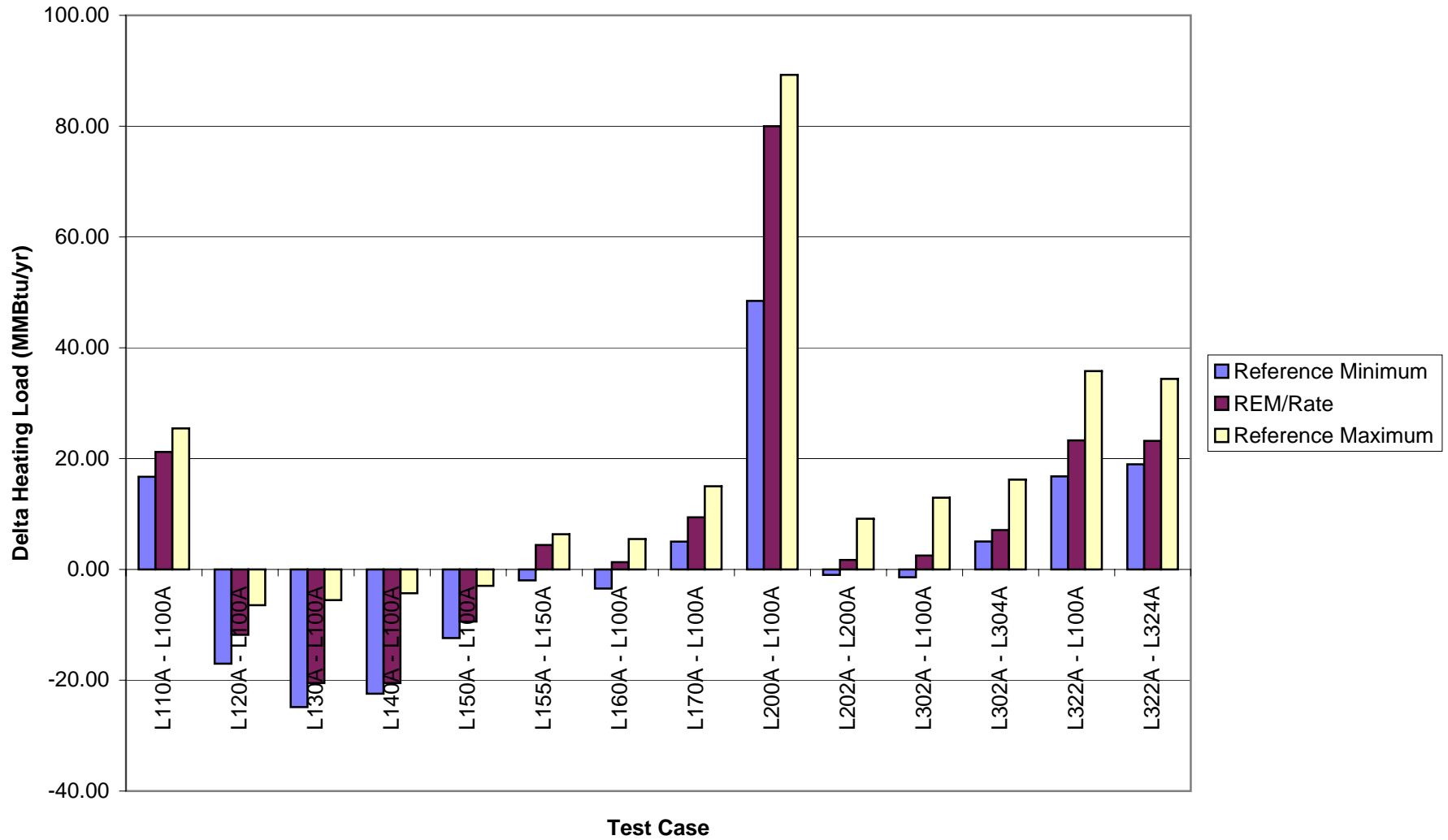


HERS BESTEST Results for REM/Rate v12.11		Max Min Ranges Adjusted for Seasons								
Test Performed:	3/17/2006									
Performed By:	Dave Roberts									
		Heating Loads				Cooling Loads				
		Colorado Springs, Colorado				Las Vegas, Nevada				
		Season: 10/6-5/14				Season: 4/20-10/21				
	Test Case	Reference Minimum	REM/Rate	Reference Maximum	Out of Range		Reference Minimum	REM/Rate	Reference Maximum	Out of Range
Base	L100A	45.56	69.9	74.07			45.52	55.5	58.50	
High Inf	L110A	66.14	91.1	95.88			49.41	58.1	63.00	
Well Insulated Roof & Walls	L120A	35.81	58.1	60.49			42.17	51.6	54.20	
Dbf Loe/Wood Windows	L130A	39.08	49.4	51.22			30.67	37.4	41.97	
Zero Window Area	L140A	40.41	49.4	53.25			18.96	21.9	29.73	
South Oriented Windows	L150A	37.87	60.5	66.02			47.83	57.9	61.27	
South Windows w/Overhang	L155A	39.71	64.9	68.49			38.93	47.1	51.97	
East & West Oriented Windows	L160A	45.8	71.2	76.04			53.28	64.8	66.49	
No Internal Loads	L170A	55.58	79.3	84.39			38.15	46	49.97	
Energy Inefficient	L200A	95.05	149.9	167.42			55.65	68.1	78.40	
Energy Inefficient-Low Abs Sol	L202A	99.44	151.6	170.84			48.88	65.6	72.80	
Slab-on-grade	L302A	53.41	72.4	80.44						
Ins slab-on-grade	L304A	44.1	65.3	68.24						
Cond Basement	L322A	71.19	93.2	103.28						
Ins Cond Basement	L324A	45.35	70	72.89						
	Delta	Reference Minimum	REM/Rate	Reference Maximum	Out of Range		Reference Minimum	REM/Rate	Reference Maximum	Out of Range
	L110A - L100A	16.72	21.2	25.44			-0.11	2.6	8.50	
	L120A - L100A	-17.02	-11.8	-6.47			-8.41	-3.9	0.64	
	L130A - L100A	-24.84	-20.5	-5.53			-21.71	-18.1	-10.85	
	L140A - L100A	-22.43	-20.5	-4.30			-34.40	-33.6	-22.56	
	L150A - L100A	-12.39	-9.4	-2.96			-2.01	2.4	6.77	
	L155A - L150A	-1.97	4.4	6.36			-16.07	-10.8	-4.62	
	L160A - L100A	-3.45	1.3	5.48			3.76	9.3	12.18	
	L170A - L100A	5.01	9.4	15.01			-13.28	-9.5	-3.37	
	L200A - L100A	48.46	80	89.25			8.12	12.6	22.15	
	L202A - L200A	-0.99	1.7	9.15			-12.36	-2.5	-0.99	
	L302A - L100A	-1.41	2.5	12.96						
	L302A - L304A	5.03	7.1	16.20						
	L322A - L100A	16.79	23.3	35.80						
	L322A - L324A	18.98	23.2	34.39						

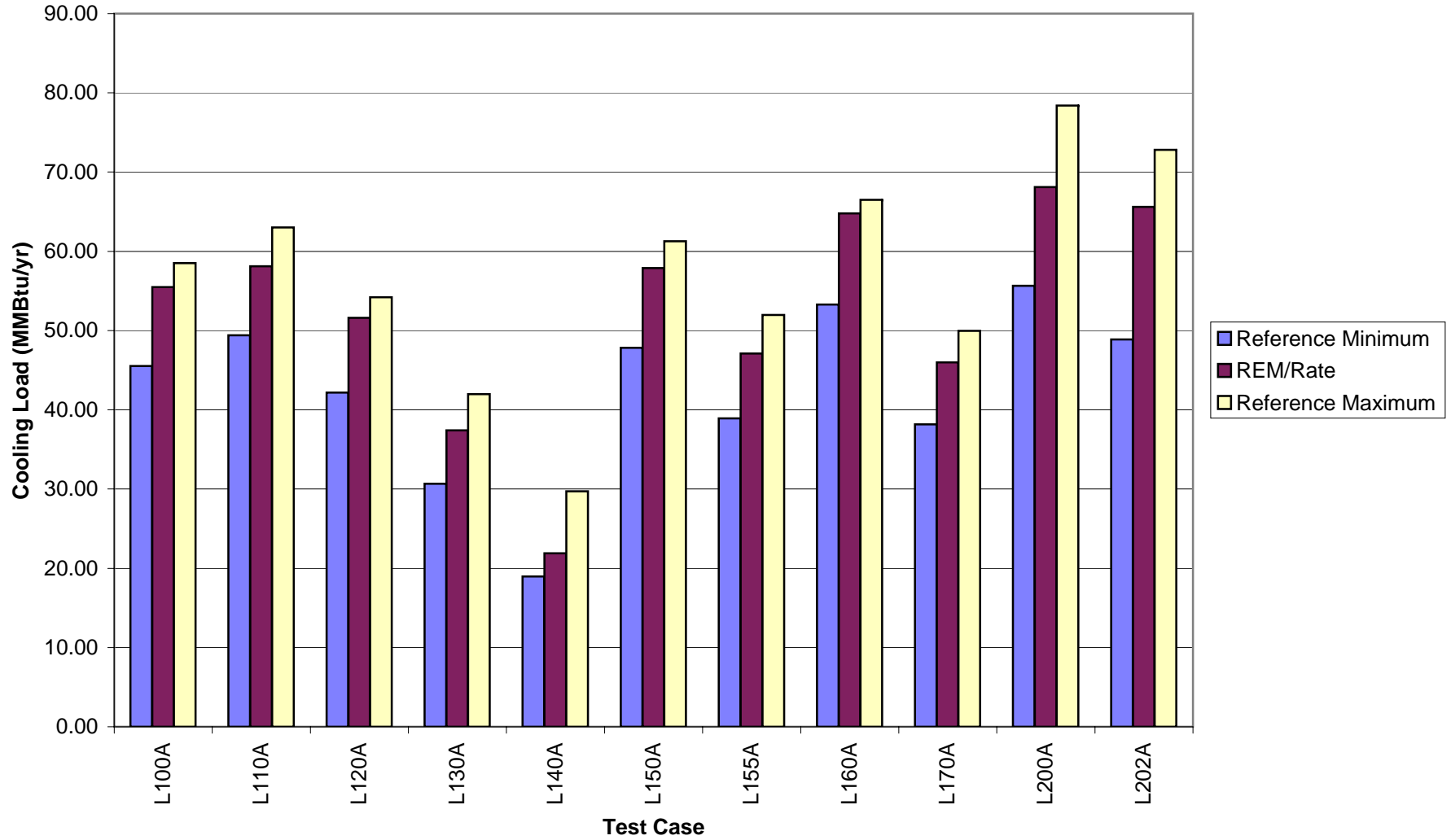
**REM/Rate HERS BESTEST Results -- Heating**  
*v12.1, Tested February 2006*



**REM/Rate HERS BESTEST Results -- Delta Heating**  
*v12.1, Tested February 2006*



**REM/Rate HERS BESTEST Results -- Cooling**  
*v12.1, Tested February 2006*



**REM/Rate HERS BESTEST Results -- Cooling**  
*v12.1, Tested February 2006*

